



**PHILIP
WOLFHAGEN**

A PROCESSION
OF SHADOWS





cover *Journey to the source XII* 2012
OIL & BEESWAX ON LINEN 200 × 214 cm



The inevitable passage of summer 2012
OIL & BEESWAX ON LINEN 91 × 300 CM





A procession of shadows 2012
OIL & BEESWAX ON LINEN 91 × 300 CM





A long succession 2012
OIL & BEESWAX ON LINEN 91 × 300cm

BIOGRAPHICAL NOTES

- 1963 Born in Tasmania
1987 Bachelor of Fine Arts, Centre for the Arts,
University of Tasmania, Hobart
1990 Graduate Diploma of Visual Arts, Sydney
College of the Arts, University of Sydney
1990–95 Lived and worked in Sydney
Currently lives and works in Tasmania

SOLO EXHIBITIONS

- 2012 *A procession of shadows*, Philip Bacon
Galleries, Brisbane
2011 *Four exaltations*, Dominik Mersch Gallery,
Sydney
2010 *The extended journey*, Bett Gallery Hobart,
Hobart
A painter's landscape, Karen Woodbury
Gallery, Melbourne
2009 *Journey to the source*, Dominik Mersch
Gallery, Sydney
Out of the garden, Philip Bacon Galleries,
Brisbane
2007 *Vapour trails*, The Australian Embassy in
Washington DC
New deliriums, Christine Abrahams Gallery,
Melbourne
2006 *Luminary traces*, Bett Gallery Hobart,
Hobart
Night visions, Sherman Galleries, Sydney
2005 *Night beacons*, Christine Abrahams Gallery,
Melbourne
2004 *The inner edge*, Sherman Galleries, Sydney
The inner edge, Academy Gallery, University
of Tasmania, Launceston
Noctiluca, Bett Gallery Hobart, Hobart
2003 *Archipelago*, Queen Victoria Museum & Art
Gallery at Inveresk, Launceston
Shifting light, Christine Abrahams Gallery,
Melbourne
2002 *High ground*, Sherman Galleries Goodhope,
Sydney
2001 *Winter journeys*, Christine Abrahams
Gallery, Melbourne
2000 *Converging planes*, Sherman Galleries,
Sydney
Liawenee exploration, Bett Gallery Hobart,
Hobart

- 1999 *Cross sections*, Christine Abrahams Gallery,
Melbourne
1998 *Surface tension*, Sherman Galleries, Sydney
1997 *Six level seas and four recollections*, Dick Bett
Gallery, Hobart
Plateaux, Chapman Gallery, Canberra
1996 *Illuminations*, Sherman Galleries, Sydney
1995 *Vanishing points*, Dick Bett Gallery, Hobart
1994 *Passages*, Sherman Galleries, Sydney
Elevations, Devonport Gallery & Arts
Centre, Devonport, Tasmania
Dick Bett Gallery, Hobart
1992 *Illusory fields, series 2*, Dick Bett Gallery,
Hobart
1991 *Illusory fields*, Syme Dodson Gallery,
Sydney
1990 *The stages of a delirium*, Syme Dodson
Gallery, Sydney
The path of least resistance, Salamanca Place
Gallery, Hobart

SELECTED GROUP EXHIBITIONS

- 2012 *Hits & memories: 10 years at the Academy
Gallery*, Academy Gallery, Launceston
Wynne Prize, Art Gallery of NSW, Sydney
2011 *Curious colony: A twenty-first century
Wunderkammer*, S.H. Ervin Gallery, Sydney
New romantics, Gippsland Art Gallery,
Victoria
25 years: An unfolding journey, Bett Gallery
Hobart, Hobart
Basic instinct, Karen Woodbury Gallery,
Melbourne
Indelible, Karen Woodbury Gallery,
Melbourne
*C20: 100 years of Australian art from the
TMAG collection*, TMAG, Hobart
Wynne Prize, Art Gallery of NSW, Sydney
2010 *Curious colony: A twenty-first century
Wunderkammer*, Newcastle Art Gallery,
Newcastle
Wynne Prize, Art Gallery of NSW, Sydney
What surrounds me, Dominik Merch Gallery,
Sydney
In partnership, Academy Gallery, School
of Visual & Performing Arts, Launceston;
Devonport Regional Gallery, Devonport

- 2009 *Four Tasmanian painters: Burns, Keeling,
Wastell, Wolfhagen*, Holmes à Court Gallery,
Perth, in association with Bett Gallery
Hobart
New gallery artists, Karen Woodbury
Gallery, Melbourne
Wynne Prize, Art Gallery of NSW, Sydney
2008 *Wynne Prize*, Art Gallery of NSW, Sydney
*Time and place: selected works from the
TarraWarra Museum of Art collection*,
TarraWarra Museum of Art, Victoria
The green zone, Academy Gallery, University
of Tasmania, Launceston
*Contemporaneous; Australian contemporary
painting 1*, Wangaratta Exhibitions Gallery,
Victoria
2007 *Wonderful world*, The Anne & Gordon
Samstag Museum of Art, Adelaide
Wynne Prize (Winner), Art Gallery of NSW,
Sydney
2006/07 *From an island south*, AsiaLink touring
Lahore, Kuala Lumpur, Bangkok
Australia and Constable, National Gallery of
Australia, Canberra
Senses of place: art in Tasmania, 1970–2005,
Plimsoll Gallery, Hobart
2006 *Salon*, Bett Gallery Hobart, Hobart
2005 *Rhapsody 21c: Tasmanian contemporary art*,
Academy Gallery, University of Tasmania,
Launceston
2004 *Great escapes*, Lake Macquarie City Art
Gallery
Frank Saxby acquisitions, Manning
Regional Art Gallery, Taree, NSW
Tidal, Devonport Regional Gallery,
Tasmania
2003 *Depth of field*, Shepparton Art Gallery,
Victoria
Depth of field, Monash University Museum
of Art, Melbourne
Painting Tasmanian landscape, Plimsoll
Gallery, University of Tasmania, Hobart
2002 *Extreme landscapes*, Sherman Galleries,
Sydney (with Philip Hughes)
2001 *Redlands Westpac Art Prize*, Mosman Art
Gallery, Sydney (Winner)
Five painters, Sherman Galleries, Sydney

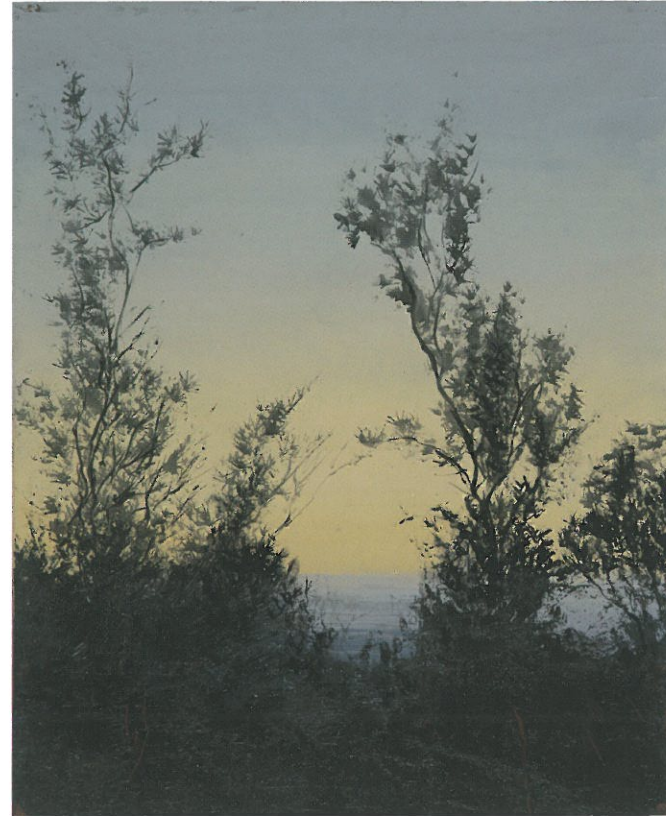
- Aspects of Tasmanian art*, Queen Victoria
Museum & Art Gallery at Inveresk,
Launceston
*Between phenomena: the panorama in
Tasmania*, Plimsoll Gallery, University of
Tasmania, Hobart
Poets and painters, Bett Gallery Hobart,
Hobart
2000 *Through the landscape*, Queen Victoria
Museum & Art Gallery, Launceston
*Uncommon world: aspects of contemporary
Australian art*, National Gallery of Australia,
Canberra
1999 *Distance*, Sherman Galleries, Sydney
1998 *Redlands Westpac Art Prize*, Sydney
*Contemporary Australian art from the Tamar
Collection*, Queen Victoria Museum & Art
Gallery, Launceston
*Leading the way: 1997–98 Acquisitions
Exhibition*, Newcastle Region Art
Gallery, NSW
1997 *Australian Perspecta*, S.H. Ervin Gallery,
Sydney
Moët & Chandon Touring Exhibition,
Queensland Art Gallery, Brisbane
Anon, Sherman Galleries, Sydney
*Site and sensibility: a selection from the
Artbank Collection*, S.H. Ervin Gallery,
Sydney
The horizon line, King Street Gallery,
Sydney

COLLECTIONS

- National Gallery of Australia, Canberra
Art Gallery of New South Wales, Sydney
National Gallery of Victoria, Melbourne
Art Gallery of South Australia, Adelaide
Tasmanian Museum and Art Gallery, Hobart
Artbank
Benalla Art Gallery
Campbelltown City Bicentennial Art Gallery,
NSW
Castlemaine Art Gallery, Victoria
Devonport Regional Gallery, Tasmania
New England Regional Art Museum, Armidale
Newcastle Region Art Gallery, Newcastle
Parliament House Art Collection, Canberra



After the rain 2010
OIL & BEESWAX ON LINEN 57 × 46 cm



Study for Journey to the source X' 2010
OIL & BEESWAX ON LINEN 57 × 46 cm

Powerhouse Museum, Sydney
Queen Victoria Museum and Art Gallery,
Launceston
TarraWarra Museum of Art, Victoria
University of Tasmania, Hobart
University of Technology, Sydney
The Australian Club, Sydney
Derwent Collection, Tasmania
Esk Collection, Tasmania
Macquarie Bank, Sydney, Melbourne and
London
Pat Corrigan Collection, Australia
Sydney Grammar School, Sydney
Muzeum Narodowe w Warszawie, Poland

COMMISSIONS, GRANTS AND PRIZES

2010 Commissioned work for the *Newcastle Chest*, Newcastle Region Art Gallery
2007 Winner, Wynne Prize, Art Gallery of NSW, Sydney
2001 Winner, Redlands Westpac Art Prize, Sydney
Awarded the *Centenary Medal*, for contribution made to the arts
1998 Commonwealth Law Courts, Melbourne
1997 Royal Women's Hospital, Sydney
1996 *Illuminations*, Australia Council, VACB Project Grant
1995 Sydney Grammar School Fellowship in Art, Sydney
1993 *Elevations*, Australia Council, VACB Project Grant
1990 Art for Public Buildings Scheme, Tasmanian Arts Advisory Board, Hobart
Project for *Unknown landscapes*, Murray High School, Queenstown, Tasmania

SELECTED BIBLIOGRAPHY

Miriam Kelly, *Philip Wolfhagen Autumn equinox; the loss of the sun*, Artonview, Issue 61
Autumn 2010, National Gallery of Australia
Christopher Allen, 'The big picture', *The Weekend Australian*, May 1–2, 2010
Christopher Heathcote, Patrick McCaughey, Sarah Thomas, *Encounters with Australian modern art*, Hermann Editeurs, Paris France, 2008

Peter Timms, *Gatecrashing the sublime*, Artlink vol 28 no 2, 2008
John McDonald, *Studio: Australian painters on the nature of creativity*, R. Ian Lloyd Productions, 2007
Laura Murray Cree (ed.), *Twenty: Sherman Galleries 1986 – 2006*, Craftsman House, Melbourne, 2006
Anne Gray, 'Australia and Constable', catalogue essay, *Constable: impressions of land, sea and sky*, NGA, March 2006
Peter Timms, *Philip Wolfhagen* (a Tasmanian monograph presented through Arts Tasmania), Craftsman House, Melbourne 2005
Malcolm Bywaters, *Rhapsody 21C: Tasmanian contemporary art*, exhibition catalogue, Academy Gallery, University of Tasmania, Launceston, 2–27 May 2005
Gillian Serisier, 'The art of collectives', *Australian Art Market Report*, no. 14, Dec 2004 – Feb 2005, pp. 30–32
'Philip Wolfhagen', *Artlink*, vol. 24, no. 3, 2004, p. 93
Terry Ingram, 'Feeding feeding at show', Saleroom, *Australian Financial Review*, 12 Aug 2004, p. 20
David Hansen, 'Philip Wolfhagen', *Art & Australia*, vol. 42, no.1, spring 2004, pp. 90–95
Maria Rae, 'Gallery director in love with history', *Examiner News*, 12 Jun 2004
Philip Wolfhagen, *Noctiluca*, artist's statement, Bett Gallery Hobart, May – Jun 2004
Laura Murray Cree, 'Beauty and hidden agendas', *State of the Arts*, Jul – Sep 2003, pp. 80–82
Susan McCulloch, 'An earthy masterpiece', *The Weekend Australian*, 19–20 Apr 2003
Bridget Arkless, *Philip Wolfhagen: Archipelago*, exhibition catalogue, Queen Victoria Museum & Art Gallery at Inveresk, Feb 2003
Benjamin Genocchio, 'Residues of space', *The Weekend Australian*, 29–30 Jun 2002
Michael Hutak, 'Australia's 50 most collectable artists', *Australian Art Collector*, issue 15, 2001

Dinah Dysart & Jackie Dunn, *Artbank: Australian art in public places*, Artbank, 2001
Robert Nelson, 'The "death of painting" a little premature', *The Age*, 22 Sep 2001
Peter Clarke, 'Picture perfect', *Country Style*, Jun 2001
Georgia Warner, 'Critics put Tassie artist in elite club', *Mercury*, 16 Jan 2001
Deborah Hart, 'Uncommon world', *artonview*, issue 23, spring 2000
Bruce Roberts, 'A fish-like boat in a water-like landscape', *Island* magazine, winter 2000
Laura Murray Cree & Nevill Drury (eds), *Australian Painting Now*, Craftsman House, Sydney, 1999
'Waxing lyrical in Tasmania', *Australian Art Collector*, issue 8, Apr–Jun 1999, pp. 24–26
Susan McCulloch, 'Guy Abrahams: dealer in optimism' *Australian Art Collector*, issue 7, 1999
Joanna Mendelssohn, 'Liquid landscapes from the island state', *The Australian*, 12 Jun 1998
Nevill Drury, *Surface tension*, catalogue essay, Sherman Galleries, Sydney, 1998
Deborah Hart, 'Temple of Earth memories', catalogue essay, *Australian Perspecta: between art and nature*, 1997
Sebastian Smee, '180 degrees of separation', *Metro*, *Sydney Morning Herald*, 20–26 Jun 1997
Victoria Hammond, 'Landscape and memory in Tasmania', *Art & Australia*, vol. 34, no. 2, summer 1996, pp. 210–219
Victoria Hammond, 'Painting the spirit of place', *40° South*, no. 5, Dec 1996
Giles Auty, 'Southern sojourn', *The Australian*, 26–27 Oct 1996
John McDonald, 'Becoming what one is', *Sydney Morning Herald*, 26 Oct 1996
Amanda Meade, 'It starts with a message', *The Australian*, 18 October 1996
John McDonald, 'Peaks of inspiration', *Sydney Morning Herald*, 4 May 1996
Colin Simpson, 'Challenging winners – to corner cutters', *The Bulletin*, 27 Feb 1996
Marie Geissler, 'Banking on art', *Qantas Club Magazine*, Feb 1996, pp. 40–43

Giles Auty, 'Sparkle of sweet success', *The Australian*, 17–18 Feb 1996
Victoria Hammond, *Brushing the dark*, exhibition catalogue, Contemporary Art Services Tasmania, touring exhibition, Jan 1996
David Hansen, 'My dog, your car, our art collection', *Art Monthly Australia*, Jul 1995
Bronwyn Watson, 'Treasures from the corporate world', *Sydney Morning Herald*, 3 Jan 1995
Felicity Fenner, 'Sublime horizons', *Sydney Morning Herald*, 8 Jul 1994
Courtney Kidd, 'Landscape as metaphor in the art of Philip Wolfhagen', *Contemporary Art Tasmania Magazine*, issue no. 5, 1994
Richard Stanford, 'Heightening the senses', *Elevations*, catalogue essay, Devonport Gallery and Arts Centre, Sep 1993
Christopher Allen, 'Seven at Ivan Dougherty Gallery', *Asian Art News*, Sep–Oct 1992
Nick Waterlow, *Seven*, exhibition catalogue, Ivan Dougherty Gallery, College of Fine Arts, University of NSW, Sydney, 1992
Jacques Delaruelle, 'Small is beautiful', *Sydney Review*, Jan–Feb 1992
Jacques Delaruelle, 'In search of the modern soul', *Sydney Review*, Nov 1991
Elwyn Lynn, 'Into the landscape of space exploration', *The Weekend Australian*, 12–13 Oct 1991
Elwyn Lynn, 'Idol worship at the altar of abstraction', *The Weekend Australian*, 27–28 Oct 1990
David McDowell, 'Hobart: Philip Wolfhagen at Salamanca Place Gallery', *Art & Text*, no. 36, 1990
Nick Waterlow, *Genius loci: spirit of place*, exhibition catalogue, Centre for the Arts, University of Tasmania, Hobart, 1989



A calligraphy of limbs No. 1 2012
OIL & BEESWAX ON LINEN 46 × 49 cm



A calligraphy of limbs No. 2 2012
OIL & BEESWAX ON LINEN 46 × 49 cm

EXHIBITION CURRENT: 7 AUGUST TO 1 SEPTEMBER, 2012



PHILIP BACON GALLERIES

2 ARTHUR STREET, FORTITUDE VALLEY, BRISBANE 10:00 AM - 5:00 PM TUESDAY TO SATURDAY
TEL 07 3358 3555 FAX 07 3254 1412 EMAIL: ARTENQUIRIES@PHILIPBACONGALLERIES.COM.AU